

Slide-Cornell Col + South:

10/16/90

165-3

Site	P	Δp	Δe	e	Map e	time	rates
(A) Trailhead	29.52	-0.44	-381	2429'		8:49 AM	
(C) Denning JC. [(B) see note]	29.08	0.00	0.00	2810'	2810'	9:16	
(D) base of steep talus	28.64	0.44	381	3191			$29.08 - 27.50$
(E) skid road	28.42	0.66	572	3382			$4180 - 2810'$
(F) 3500 sign	28.34	0.74	642	3452			$= 1.58''$
(G) skid road	28.30	0.78	676	3486			$\frac{1.58''}{1370'}$
(H) old SNY gate	28.20	0.88	763	3573			$r = 0.867$
(I) SUG grove	28.00	1.08	936	3746			
(J) Curtis Trail JC.	27.80	1.28	1110	3920		10:03	
(K) Slide Summit	27.50	1.58	1370	4180	4180'	10:17	
		1.10	930	4180			
(L) mid-staircase	27.76	0.84	710	3960			$28.60' - 27.50'$
(M) Spring	27.84	0.76	642	3892			$4180 - 3250'$
(N) overhang ledge	28.15	0.45	380	3630			$= 1.10''/930'$
(O) 3500' sign	28.36	0.24	203	3453			$r = 0.845$
(P) 1st spruce	28.40	0.20	169	3419			
(Q) Cornell Col	28.60	0.00	0	3250	3250'	11:09 → 11:25	
(R) upper campsite	28.74	-0.14	-122	3128			
(S) lower campsite	28.77	-0.18	-157	3093			
(T) N end spruce grove	28.93	-0.33	-287	2963			
(U) Confluence-end hike	27.96	-0.36	-313	2937		NOON	We $r = 0.870$
(V) NE Spruce Grove	28.78	-0.18	-157	3093			midway between $0.845 \text{ \& } 0.894$
(W) 1st PB	28.66	-0.06	-52	3198			
(Q) Cornell Col	28.60	0.00	0	3250	3250'	12:40 to 12:45	
(PP) East lookout	28.52	0.08	72	3322			$28.60' - 27.56'$
(P) 1st spruce	28.44	0.16	143	3393			$4180 - 3250'$
(O) 3500' sign	28.38	0.22	197	3447			$= 1.04''/930'$
(N) overhang ledge	28.18	0.42	375	3625			$r = 0.894$
(M) Spring	27.88	0.72	644	3894			
(K) Slide Summit	27.56	1.04	930	4180	4180'	1:43 → 2:13	

Site 1654	P	Δp	Δe	e	Map e	Time	Rate
(K) Slide Summit	27-56	1.62	1440	4180	4180'	2-13	
(X) Steps Jc.	27-98	1.20	1067	3807		(X) 2-37	$\frac{29.18 - 27.56}{\frac{4180' - 2740'}{1.62}}$ $r = 0.889$
(V) Blaze line = lv SW	28-08	1.10	978	3718		(Z) 2-53	
(Z) Lookout #176	28-20	0.90	800	3540			
**							
BA Stumps	28-30	0.88	782	3522			
CO 1st Hem	28-48	0.70	622	3362			
DD Stumps	28-70	0.48	427	3167			
EE reentr SW	28-78	0.40	356	3096	2976		
FF Hem ledge	28-97	0.21	187	2927	2927		
(GG) Denning Tpk.	29-18	0.00	0	2740'	2740'	3-43	
(A) Trail Head	29-54	-0.36	320	2420		4-00	
(HH) Winnisook	29-24	-0.06	53	2687	2680'	—	
(MM) Top of ledge with crevice beneath	28-04						Use $r = 0.894$

Notes on Geography:

On way in, the unmarked trail was followed from the Col @ with some difficulty past

Upper Camp

middle camp (K)

lower camp (S)

to the confluence (U).

The westerly brook has a parallel dry ravine 'deep' where the trail 1st joins it

The trail is occasionally marked with red paint, sometimes with white background.

Where is peak in Taconic directly over Camell Mtn.?

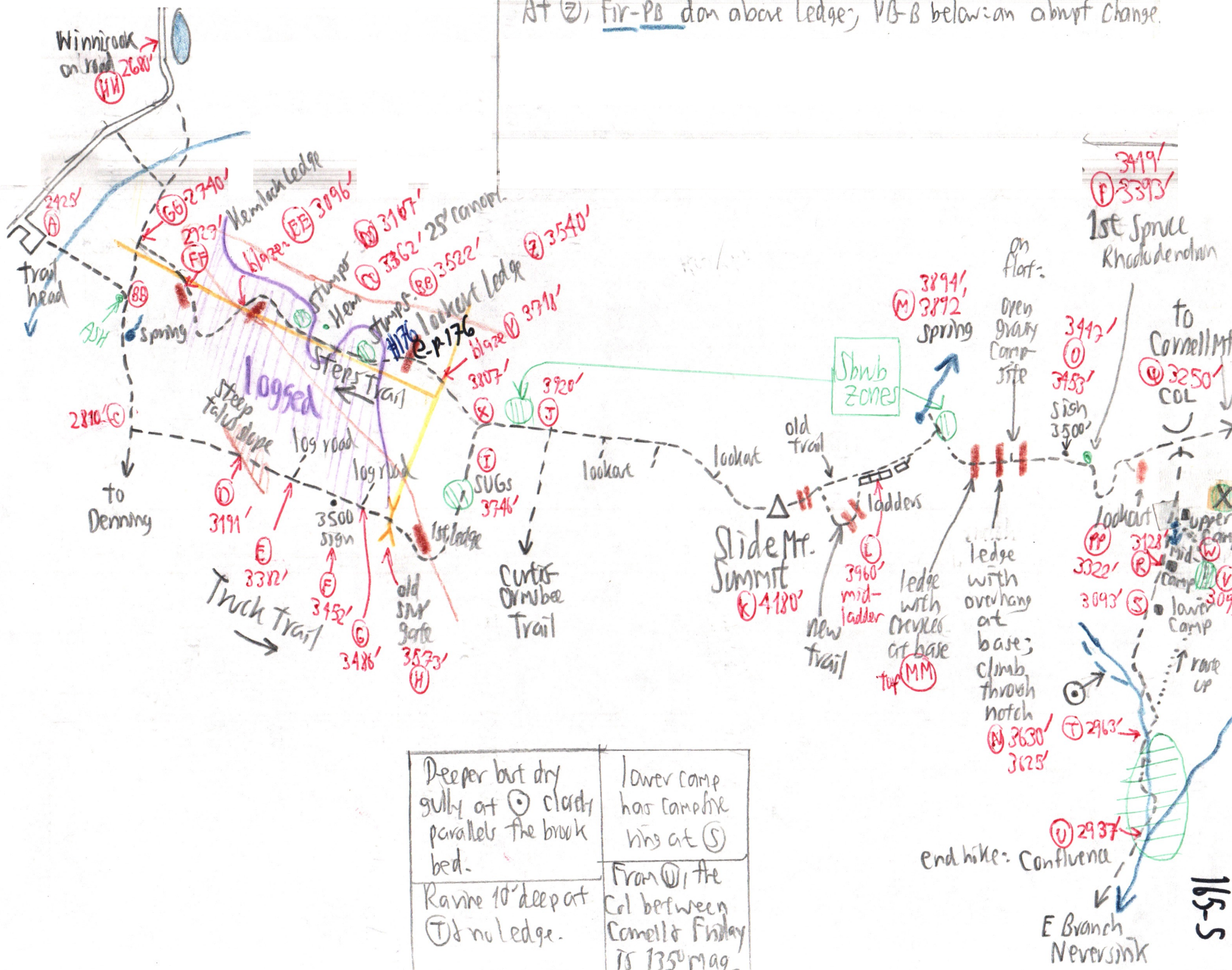
On return, the trail was lost above (T) and the bushwhack route passed (V) & (W),

joining the unmarked trail at the upper Camp.

Perceplain is visible from Spring (M) only in the Esopus Valley, at $\pm 2500'$, not elsewhere in Catskills.

Older bank is stair-stepped

At ②, Fir-PB dom above ledge, VB-B below-an abrupt change.



Deeper but dry gulch at ① clearly parallels the brook bed.	Lower camp has campfire pits at ⑤
Ravine 10' deep at ① & no ledge.	From ①, the Col between Cornell & Friday is 135' mag.

Vegetation

Two-story Fir forest at upper end of 3900' W spur of Slide: older 30', younger 10'. 165-6

FIR one at (A). Scarce at (EE) scattered at (D) on talus. Common at a similar elev. as (E) on the Curtis-Dymabee Spur

Abundant at (H)
Temporarily scarce at (I)
Dominant (J) to (M) - thick ^{(U) locally}
Scattered (M) to (P) in hdwds.
Absent (Q) to (S).
Scattered small (T) & (U) = few trees
2" x 15' to 4"
Two Fir (small) at (V) & (W)
Healthy atop Slide to 10" ^{yr} leaders.

SUG drop out abruptly at (D) where trail leaves a gentler deep-till slope & climbs a steep talus slope dom by YB.
Reappear in grove at (I)
One tree at (S) -- the only one past (I)!! On Steps Trail, (EE) & below.

ILEX MART still green at (EE)

CC above (L)

ASH on ascent one noted at (B) (29.34") but elev. not calculated because, on descent, a higher ASH was noted about 10' below the June - at (BB), elev. ca. 2740.

BEECH dominates from (Q) to (U) S of the col, not SPRUCE. Only one sub seen at (S). At (S) canopy 35' tall.

STUMPS

at (BB) in BC-B-YB dom, Scarce Fir.
at (DD) & (EE). None at (FF). Log roads must come up from Truck Trail on S.

PB From (CC) on W slope of Slide to (W). Common by (Z) on steps. (W) but none below that.

HEMLOCK:

A tree 1" x 7' at (U).
Two huge trees at (W), 36" x 24"
Highest on W of Slide at CC.

At (N) = RM-YB-PB-FIR

VEW at (FF) not below lookout

RHODODENDRON = 4 thickets around (P)

VCAS at (PP) & (Camel)

(Q) **COL FLORA** shallow
YB SM RA to ledge
B OX & bouldery
RM VA
BC RS
PB \$ Camell.

(U) **CONFLUENCE FLORA**
LL, Epiphytes, MO, MITCH
B, YB, SPR, RM, VA, FIR.
OX, V

(N) PIN, YB, PB, RM RM at (Y)

(MM) B, VA, PB, YB, PIN

Spruce in the Col

1st appear at ca. 3400' (P) on Slide.
None at col (Q)
A few young & one mature at Upper Camp, betw. (Q) & (R), ca. elev. 3200'.
Scattered at (B), still few
None at (S).

{ North end of grove at (T)
Center of grove at (U):
to 26" x 80'. Big YB across break from the big spruce at (T) for relation. Much kept
Grove at (V) with abn kept to 24". Dense VA viewed from (M), the main SPR grove is NOT in col (Q) or along the ^{beck} Nerveish but rather on the W slopes of Camell & Friday.

Healthy

Photos

1. Conglomerate at Lower site
2. Shrub scrub at (M) PB, MM, SOB, CHC, VA, PIN, YB
3. Spruce grove at (U)
4. East from (PP)
6. east from (M)
5. Giant Ledge in shadow
7. Steps Lookout (Z) to W.

Veg at (Q) = RM-BC-YB-B-PB-FIR

165-6A

